

NORDMEC

ENGINEERING SERVICES



- Structural Steel Constructions
- Industrial Manufacturing
- Site Maintenances
- Ship Equipment Manufacturing
- Ship Repair
- Spare Parts Manufacturing
- Machining Works
- Copper, SS Manufacturing

info@nordmec.com.tr | www.nordmec.com.tr



1000 m²

CLOSED WORKSHOP AREA

30T Lifting Capacity

Welding Machines

Sheet Metal Roller

Profile Bender

Different Capacity Hydraulic Presses



OUR FIELD OF ACTIVITY

- Manufacturing of Industrial Equipments
- Manufacturing of Ship Equipments
- Repairing of Steel Equipments
- Piping Works
- Crane etc. repairing and manufacturings
- Piston Cylinder Manufacturings
- Stainless Steel Manufacturings
- Welded Copper Manufacturings

DETAILS AND SKILLS OF OUR EMPLOYEES

- Total 20+ employee
- 2 Mechanical Engineer
- 1 Technician
- Basic communication skills in English
- Ability to travel and accomodate world wide

SOME OF OUR STRUCTURAL STEEL CONSTRUCTION

- *Steel Construction Design*
- *Steel Construction Manufacturing*
- *Steel Construction Installation*

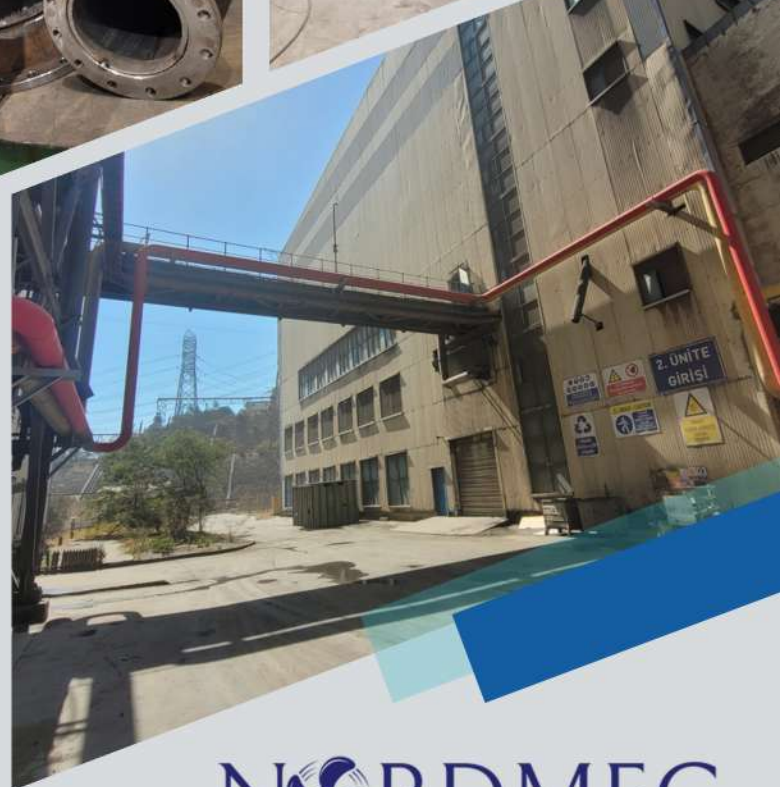


NORDMEC
ENGINEERING SERVICES

info@nordmec.com.tr | www.nordmec.com.tr

SOME OF OUR INDUSTRIAL PIPING, SPOOL MANUFACTURING

- Spool Manufacturing
- Industrial Piping Installation
- Piping Revisions



NORDMEC
ENGINEERING SERVICES

info@nordmec.com.tr | www.nordmec.com.tr

SOME OF OUR INDUSTRIAL MANUFACTURING

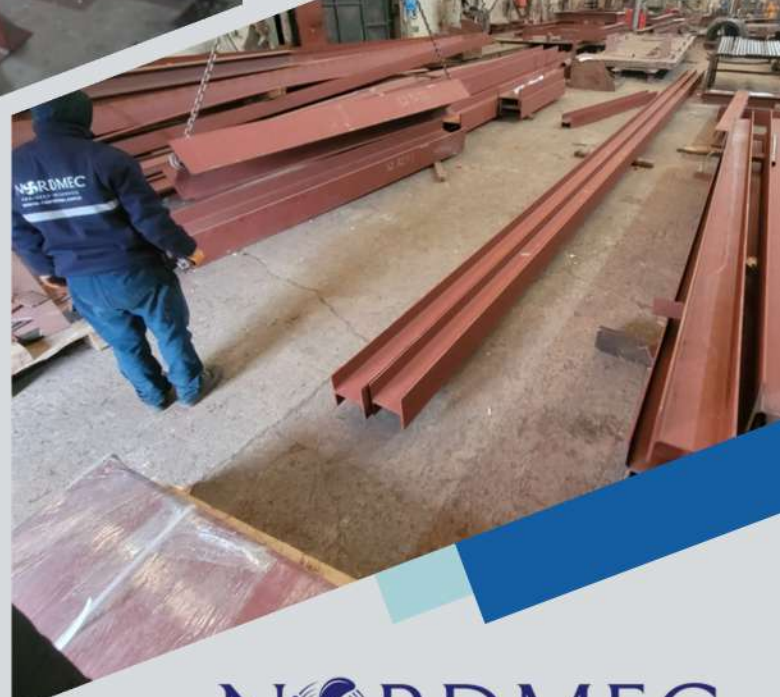
- *Steel Construction*
- *Mechanical Parts*
- *Machinery Manufacturing*
- *Spare Parts Manufacturing*
- *Piping Works*



NORDMEC
ENGINEERING SERVICES

info@nordmec.com.tr | www.nordmec.com.tr

SOME OF OUR
INDUSTRIAL
MANUFACTURING



NORDMEC
ENGINEERING SERVICES

info@nordmec.com.tr | www.nordmec.com.tr

SOME OF OUR
**INDUSTRIAL
MANUFACTURING**



NORDMEC
ENGINEERING SERVICES

info@nordmec.com.tr | www.nordmec.com.tr

SOME OF OUR SITE WORKS

- Tank Farm and Instrumentations
- Mechanical Maintenance
- Construction Site Works



NORDMEC
ENGINEERING SERVICES

info@nordmec.com.tr | www.nordmec.com.tr

SOME OF OUR INDUSTRIAL FACILITY MAINTENANCE

- *Power Plant Maintenance*
- *Arc Furnace Maintenance*
- *Scheduled Facility Maintenance*
- *Stainless Steel Piping Works*



NORDMEC
ENGINEERING SERVICES

info@nordmec.com.tr | www.nordmec.com.tr

SOME OF OUR ON BOARD MAINTENANCE

- *Vessel Mechanical Maintenance*
- *On-Board Piping*
- *Worldwide Service with Certified Workers*

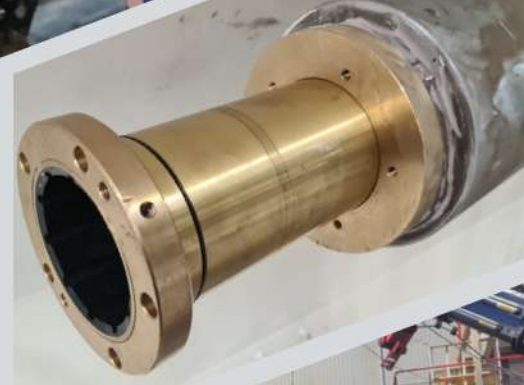


NORDMEC
ENGINEERING SERVICES

info@nordmec.com.tr | www.nordmec.com.tr

SOME OF OUR SHIP REPAIR WORKS

- *Equipment Installations*
- *Equipment Repairs*
- *Fit-Up and Welding Works on Board*
- *Chain Locking Systems*



NORDMEC
ENGINEERING SERVICES

info@nordmec.com.tr | www.nordmec.com.tr

SOME OF OUR SHIP EQUIPMENT MANUFACTURING

- All Type Manholes
- Platforms / Ramps
- Handrails
- Rudders
- Vertical Ladders



NORDMEC
ENGINEERING SERVICES

info@nordmec.com.tr | www.nordmec.com.tr

SOME OF OUR ARC FURNACE EQUIPMENTS

- *Steel Water Cooled Ducts*
- *Copper Water Cooled Ducts*
- *Shell Panels*
- *Roof Panels etc.*



NORDMEC
ENGINEERING SERVICES

info@nordmec.com.tr | www.nordmec.com.tr

SOME OF OUR STAINLESS STEEL AND COPPER WORKS

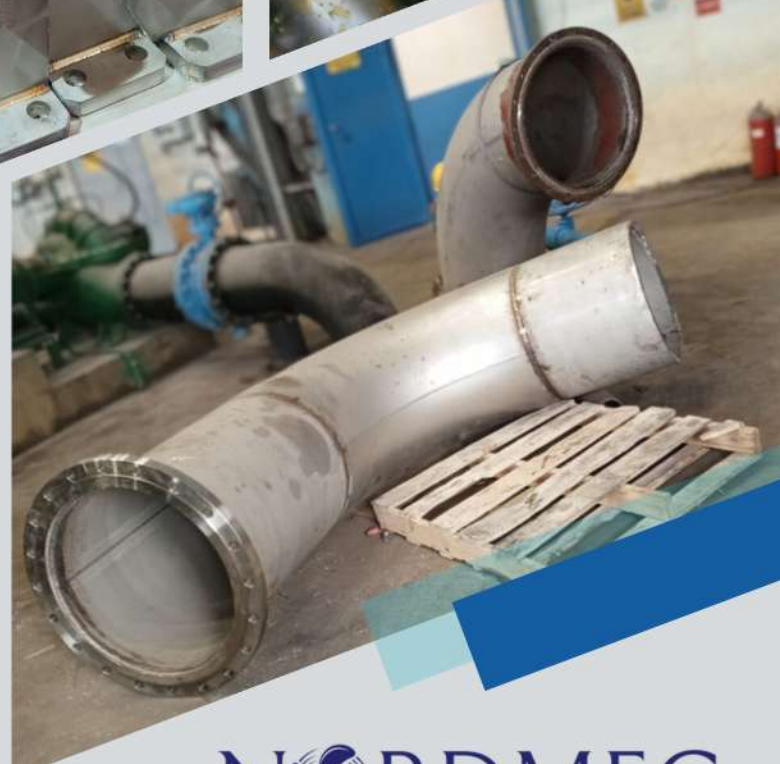
- *Stainless Steel Machinery Equipments*
- *Stainless Steel Site Works*
- *Stainless Steel Spare Parts Manufacturings*
- *Copper Piping Manufacturings*



NORDMEC
ENGINEERING SERVICES

info@nordmec.com.tr | www.nordmec.com.tr

SOME OF OUR
**STAINLESS STEEL AND
COPPER WORKS**

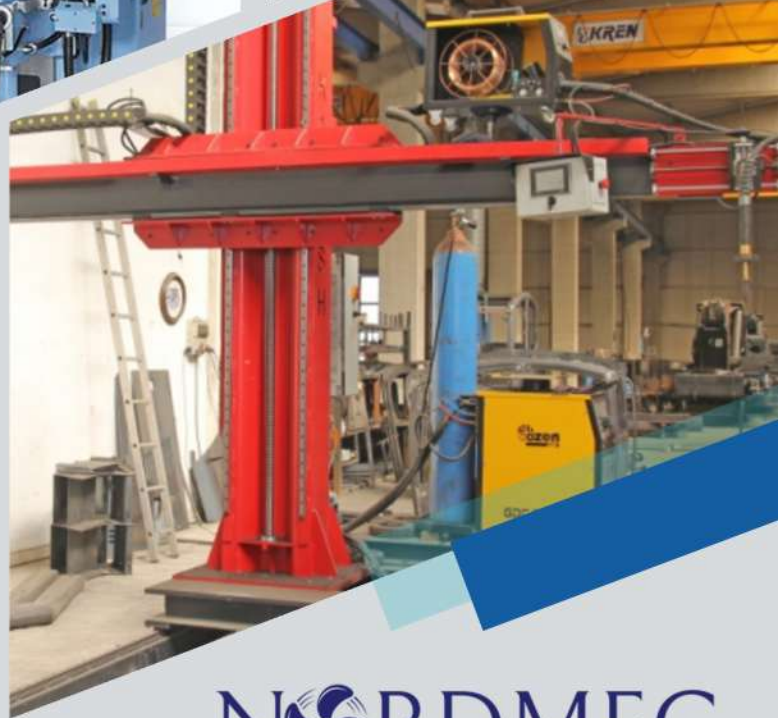
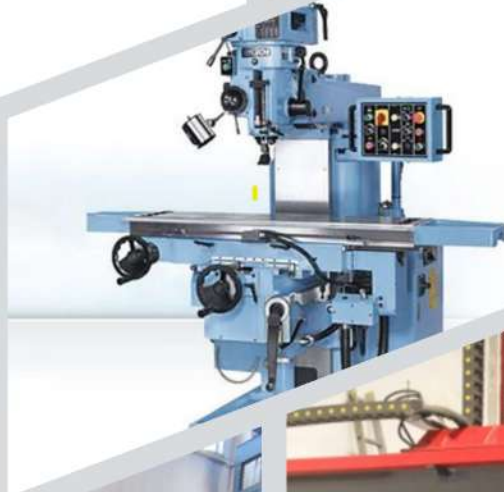


NORDMEC
ENGINEERING SERVICES

info@nordmec.com.tr | www.nordmec.com.tr

OUR MACHINE PARK

- *Robotic Laser Cladding 6 kw*
- *6 mt. Lathe (900 mm Dia.)*
- *Vertical Lathe (1600 mm Dia.)*
- *Milling Machine*
- *Boring Machine*
- *Column Boom Welding Systems*
- *Pipe and Profile Bending Machine*



NORDMEC
ENGINEERING SERVICES

info@nordmec.com.tr | www.nordmec.com.tr

SOME OF OUR REFERENCES

- KARPOWERSHIP
- LIMAK HOLDING
- İÇDAŞ SHIPYARD
- ERSEL MACHINERY
 - IC HOLDING
- IZMIR DEMİR ÇELİK SANAYİ A.Ş.
 - KROMAN ÇELİK A.Ş.
 - KARDEMİR ÇELİK A.Ş.
- BAŞTUĞ METALURJİ SANAYİ A.Ş.
 - YENİKÖY KEMERKÖY E.S.
 - KRY COATING & DENİZCİLİK
 - PRIME PROSES
 - D TEKNİK MÜHENDİSLİK
 - RDM ENGINEERING
- ALTERNATIVE ENERGY SOLUTIONS
BY DTS
 - VİNÇSAN

KARPOWERSHIP

Limak

İÇDAŞ®
İÇDAŞ ÇELİK ENERJİ TERSANE VE ULAŞIM SANAYİ A.Ş.

IC
OR
HOLDING

ERSEL
AĞIR MAKİNE SAN. VE TİC. A.Ş.

Kardemir
Çelik Sanayi A.Ş.

IDÇ IZMIR DEMİR ÇELİK
SANAYİ A.Ş.

KROMAN Çelik

VİNÇSAN®
Vinç Sanayi ve Ticaret A.Ş.

YENİKÖYKEMERKÖY

İÇDAŞ®
ELEKTRİK ENERJİSİ ÜRETİM VE YATIRIM A.Ş.

**WE SERVE ALL
OVER THE WORLD**

NORDMEC

ENGINEERING SERVICES



+90 216 504 61 00
+90 537 440 88 98



info@nordmec.com.tr



www.nordmec.com.tr

Evliya Çelebi Mah. Koşar
Sk. A Blok No: 2 İç Kapı No: 9
Tuzla / İstanbul



SISTER COMPANY OF

MEC your solution
PARTNER